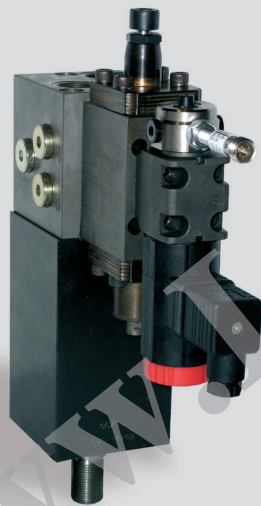


## Hydraulic Ram Control Unit HSE NG 6 Technical Data Sheet



### Design and Function

Common features of ram control units:

- modular design
- robust valve elements
- high dynamics
- simple control structure

The integration of all necessary valve components into a manifold mounted directly on the block cylinder results in a compact design and best power density. Together with additional mechanical feedback, the hydraulically piloted main valve forms the basis for the stroke control.

Top dead center control is always with mechanical closed loop feedback. Bottom dead center control may be with electrical feedback or with mechanical feedback control, depending on the application.

The hydromechanical design of the stroke control unit offers an accurate and drift-free top dead center. Due to the fast steering process, the bottom dead center has a good repeatability as well.

## Technical Data

### General

Ram force	10 to 200 kN (standard design)
Ram return force	approx. 50% ram force
Operating force tdc	250 N at 80 bar control pressure
Operating force bdc	150 N (at mechanical bdc reversal)
Ambient temperature	-5 to +50 °C
Mounting position	mountable in any position

### Hydraulic

Operating pressure	max. 250 bar
Control pressure	80 bar; max. 160 bar
Hydraulic oil temperature	-10 to +70 °C
Viscosity range	10 to 300 mm <sup>2</sup> /s

### Electric

Valve control	Voith stroke control HS2
Valve voltage (±10%)	24 V DC
Valve switching time „Start“	8 ms
Valve switching time „bdc“	7 ms
Power consumption P20	20 W
System of protection	DIN IP65, connected valve plug 40050

Further specific performance data according to computation minutes.

## Features

- highly dynamic punching and shearing drive for shortest cycle time
- smooth stroke operation via hydraulically damped cylinder ram
- stable top dead center position without drift
- exact bottom dead center reversing for process safe stroke operation
- manually adjustable stroke positions; optionally electrical
- simple functions with robust valve technique
- monitored processes with low control complexity

## Options

- stroke control units NG 10 and NG 25 for higher force range
- stroke control unit HSP for programmable stroke positions
- complete punching systems

## Electronic Control

The ram control units HSE are delivered with an electronic control, the link between hydraulics and machine control. This control is adapted to the application. Please refer to the technical data from the data sheet of the electronic control.

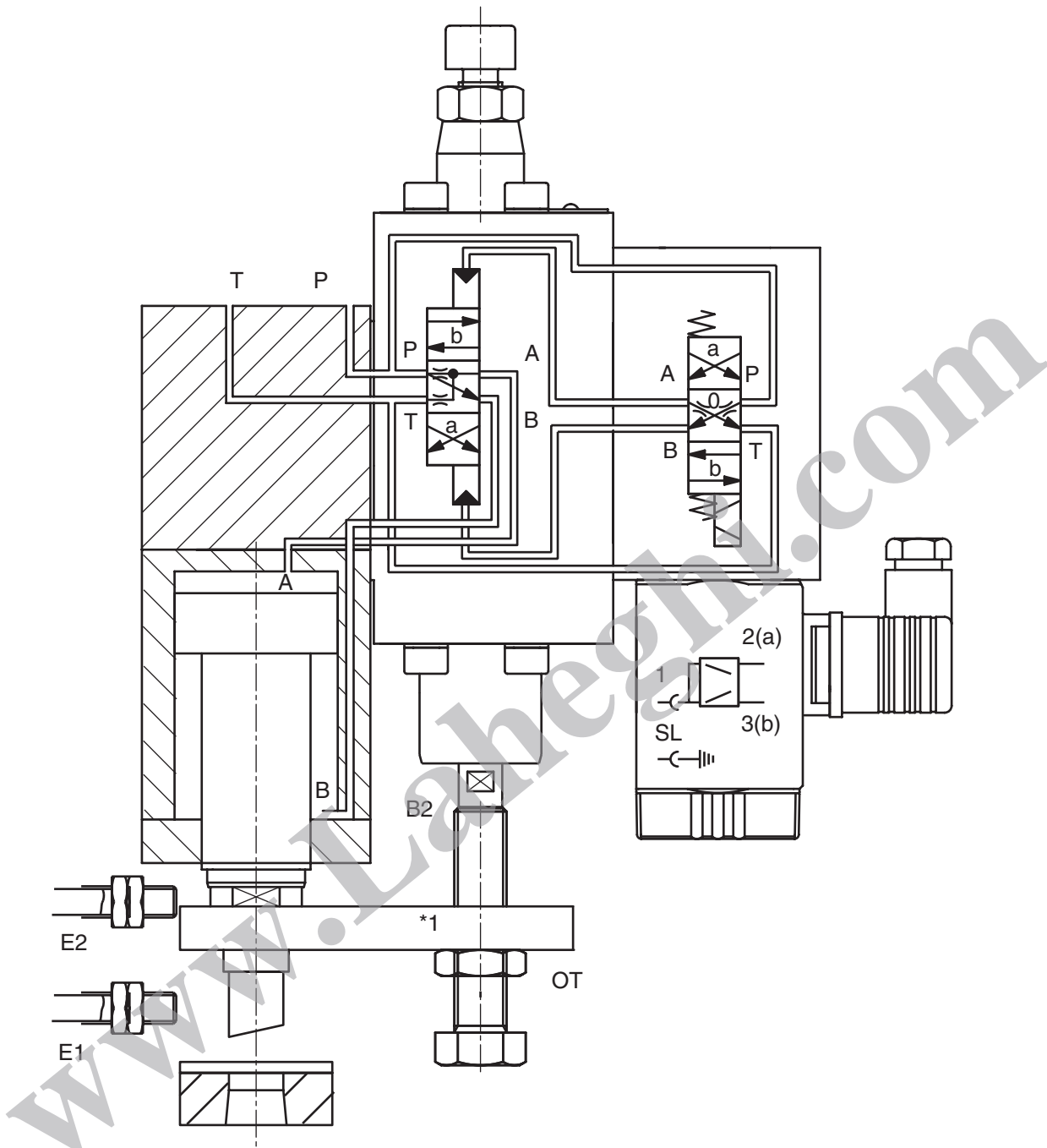
## Applications

- punching / nibbling
- shearing / cutting
- stamping

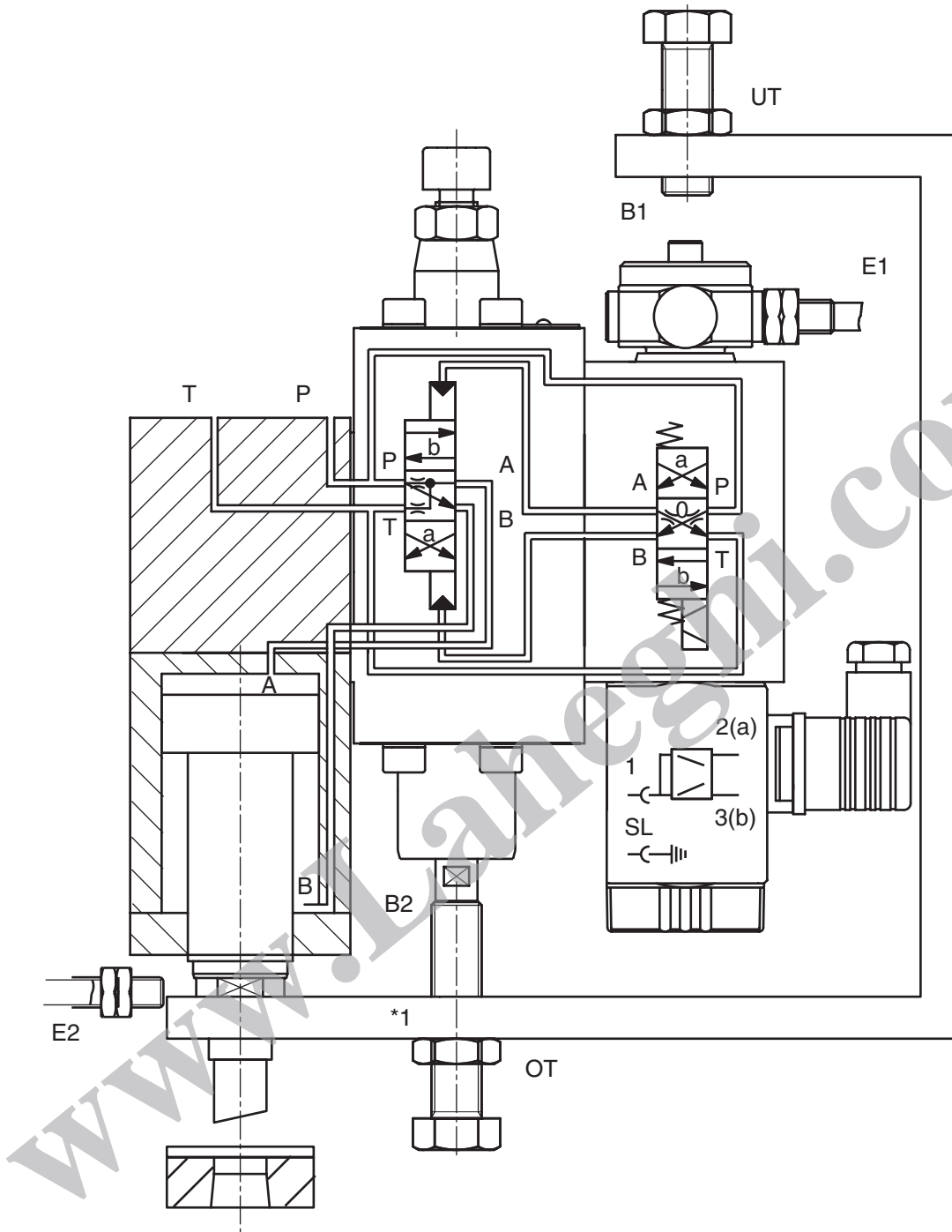
## Application

## Specific Performance

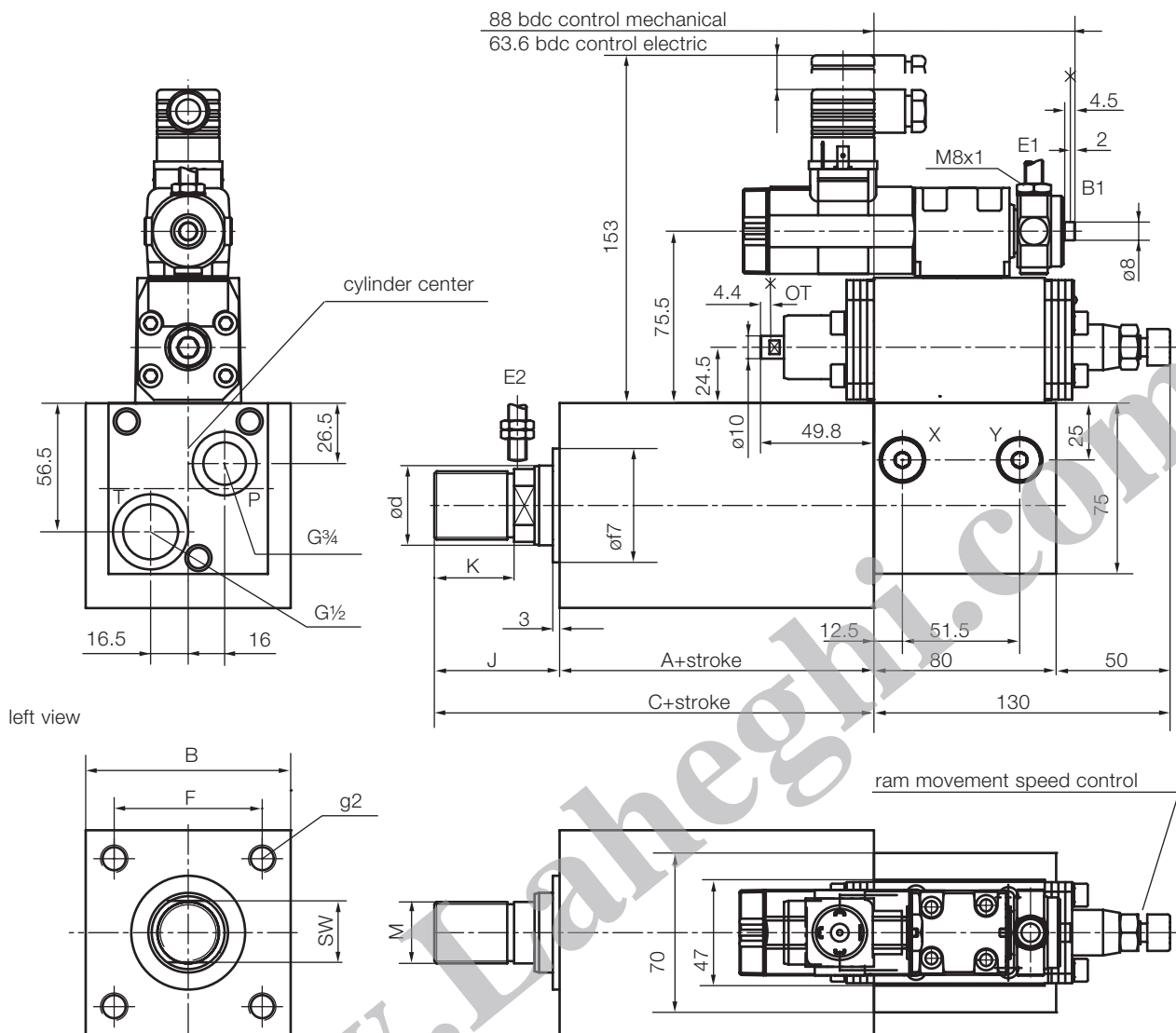
Punching Drive	<ul style="list-style-type: none"><li>• Punching force: 70 kN</li><li>• Total cycle time at 10 mm stroke: 40 ms</li></ul>
Wire Cutting Machine	<ul style="list-style-type: none"><li>• Shearing force: 20 kN</li><li>• Total cycle time at 12 mm stroke: 35 ms</li></ul>



Proximity switch E1 and E2 and the mechanical parts \*1 are not scope of delivery.



Proximity switch E2 and the mechanical parts \*1 are not scope of delivery.

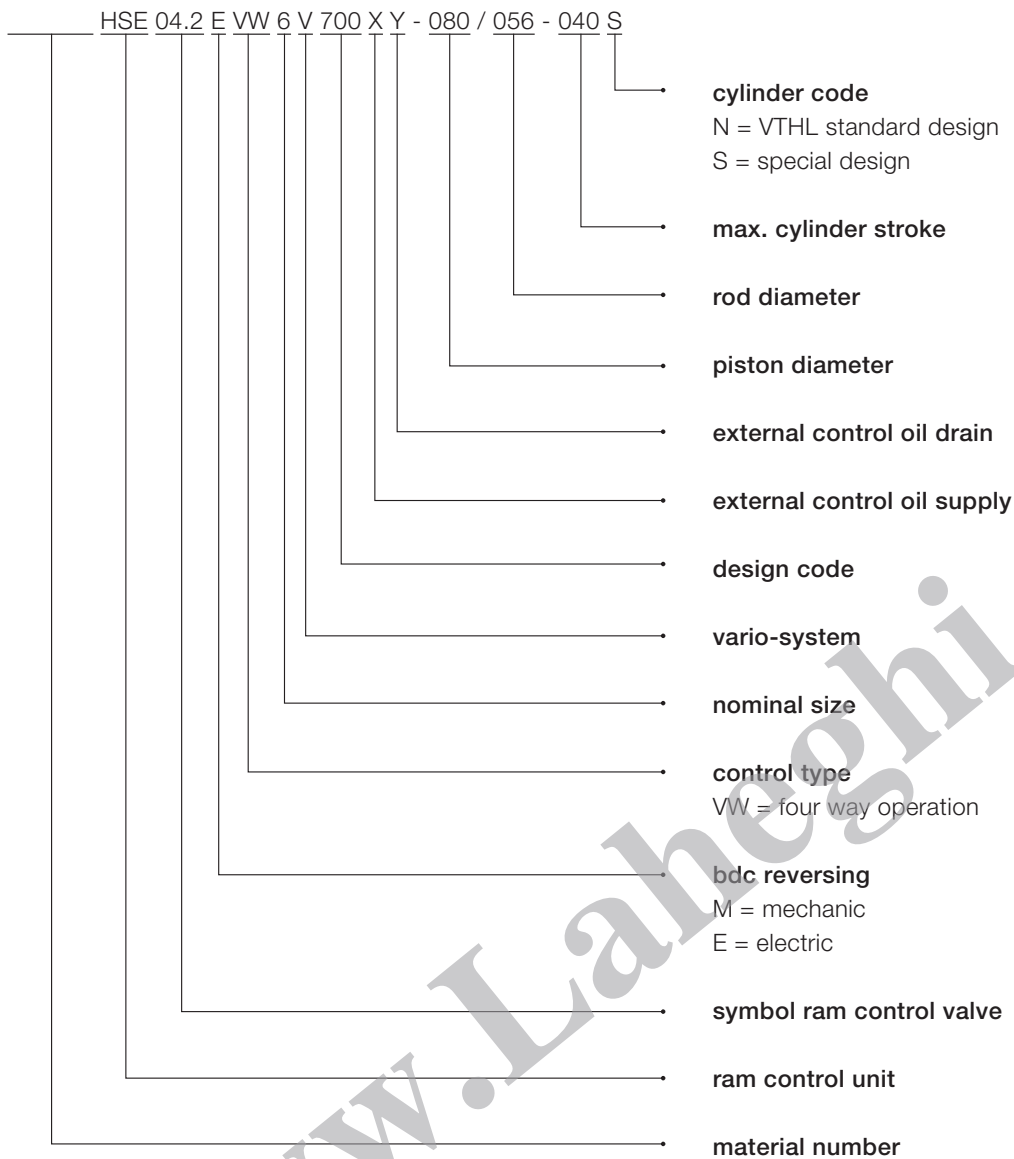


Dimension Table Standard Cylinders

Ø rod	Ø d	A	B	C	F	J	K	M	SW	g2
40	28	90	75	134	55	44	30	M20x1,5	22	M10
50	35	98	90	153	65	55	35	M27x2	27	M12
63	45	120	105	182	70	62	42	M30x2	36	M16
80	56	135	125	210	90	75	50	M42x2	46	M16
100	70	190	150	280	110	90	60	M48x2	60	M20

further cylinder dimensions on request  
all data in mm

## Type Code



This is a translated document. Original language: german.  
Legally binding language version of document: german.

Voith Turbo H + L Hydraulic GmbH & Co. KG  
Schuckertstraße 15  
71277 Rutesheim, Germany  
Tel. +49 7152 992 3  
Fax +49 7152 992 400  
sales-rut@voith.com  
www.voith.com/hydraulik-systeme



**VOITH**  
Engineered Reliability